

TUI ORA LTD
"Let Unity Prevail"

tui oranga

Newsletter published by TUI ORA LTD

Edition 24 - November 2007

Sustainable Employment Programme

In 2002 Te Rau Pani began delivering a Ministry of Social Development demonstration pilot programming, aimed at getting Taranaki people, who experience barriers to employment due to mental health difficulties, off the benefit and into paid work.

This innovative programme, targeted at Maori, has evolved into a sustainable service with a dedicated team of three full time employment specialists, supported by business support and a wide range of clinical staff. The Te Rau Pani team also delivers an employment support programme from Vote Health for the District Health Board for its mental health consumers in South Taranaki.

The programme offers a mobile, case managed programme which wraps individualized support around the job seeker, at the same time engendering confidence, motivation and inspiration. One work seekers describes Te Rau Pani "as a breath of fresh air, helping me to become a relatively normal functioning contributing member of the community and a positive role model for my children".

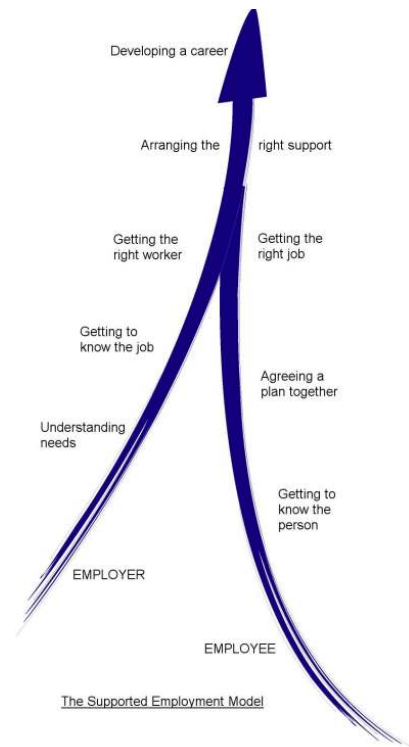
For employers, the team offers in-work support to the employee, a rapid advisory and liaison response, free staff education, links to WINZ case managers for work subsidies plus a pool of potential work ready employees. The team has found there has often been more work available than job seekers.

The flow on effects of the programme, to whanau, families and the local community is immeasurable. All of the participants came from a background of entrapment in the

illness and poverty cycle with many living the usual sequelae of alcohol & drug abuse and family violence.

Te Rau Hinengaro 2006 - The NZ Mental Health Survey recently released, involved interview with nearly 13,000 people in 2004, including almost 2,600 Maori. The survey found that almost 30 % of Maori had a mental disorder in the previous 12 months, compared to 19.3% of others. It also confirmed that there are high levels of severity of mental disorder amongst Maori. Nearly a third with mental illness were classified as serious but less than half of these had any contact with health care services.

This type of research validates Social Development and Health Ministry's NZ Disability & Primary Health strategies and enables a collaborative focus on sub groups in New Zealand. It can be safely assumed that many of those surveyed will be in receipt of Work & Income benefits. Te Rau Pani's brand of employment support demonstrates the potential of collective thinking and working to achieve meaningful social and health outcomes for all New Zealanders.



kei roto

- ◆ Kai mo te Hinengaro
- ◆ Te Matarau Conference 2007
- ◆ Te Rangi Hiroa Day
- ◆ He Iti, He Pounamu
- ◆ Sportswomen Award
- ◆ Tui Ora sign for WOMAD

websites

www.tematarau.org.nz

Download presentations from the recent Te Matarau Conference

www.tuiora.co.nz

Download this newsletter and previous editions from the website.

Kai mo te Hinengaro

The past few months have been a period of significant change within the management team of Tui Ora. This followed the resignation of Brenda Rea as Co-CEO of Hauora Taranaki and the Boards of Tui Ora and Hauora Taranaki decision to collapse the two CEO positions into one.



For the sake of transparency the CEO position is a 0.5/0.5 split between the two entities. This has necessitated the appointment of two enhanced operational management positions. Accordingly, Rangi Reddy has been appointed to Manager, Tui Ora and Pauline Cruickshank has been appointed to Manager, Hauora Taranaki.

Clearly, there are many advantages in the two management teams working more closely together. The teams are in the process of identifying the opportunities that could improve performance as well as make us more efficient. Obviously, this has greatly been enhanced with the co-location of both teams following the refit of our new office facility.

Finally, I would like to acknowledge the role of my former colleague, Brenda Rea, in bringing the two entities together. Through her vision of the future she was able to see what was possible in bringing the organisations closer together. Her leadership and passion for the vision was a key success factor in getting us to where we are now.

Heoi ano

na, Hayden Wano
Chief Executive



The fourth Te Matarau Conference was hosted this year by Ngati Porou Hauora from 31 October - 2 November, in Gisborne.

The Conference presented an amazing programme of speakers, all working towards improving Maori Health outcomes, including:

- ✓Paparangi Reid "What exactly is Population Health"
- ✓Rawiri Tipene-Leach "Versing the Traditional in a Contemporary Idiom"
- ✓Lynette Stewart "Kotahitanga for Health"
- ✓Marama Parore "One Heart, Many Lives and Social Marketing in the Health Sector"
- ✓Paratene Ngata "Health Sciences : Ngati and the Future"
- ✓Hemi Toia "Innovative Strategic Thinking"
- ✓Naida Glavish "Maori in today's Health Environment"
- ✓Te Kani Kingi "Implications for Maori Health Development"

Presentations are available from the website www.tematarau.org.nz

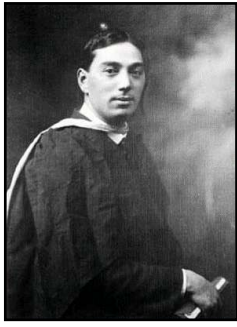
Facilitated discussions on day three of the conference explored the pathways within He Korowai Oranga. What is working and what could be done better. From these discussions some strong statements were formulated, towards which Te Matarau will continue to work.

Hon. Parekura Horomia was the guest speaker at the conference dinner to present the Te Matarau Scholarships. Initially just four scholarships were available, this year the Minister increased the number of scholarships to eight, each worth \$5,000.

In his speech the Minister recognised, "Maori still experience some health inequalities compared with non-Maori, but we are working hard to turn this around for Māori. First, that effort concentrates on ensuring that mainstream health services work better and more effectively for Maori. Second, we have also strengthened healthcare provision to Maori, through the development of Maori health providers and I am pleased to be able to say that there has been a substantial increase in the number of Maori health providers."

Photo to right: Tui Ora Staff at Te Matarau Conference outside entrance to Te Poho o Rawiri Marae, Gisborne.

Te Rangī Hiroa



Tui Ora Provider, Tu Tama Wahine o Taranaki have been a key support group for the Te Rangī Hiroa Komiti who have been instrumental in returning Ngati Mutunga to the marae in Urenui to celebrate Te Rangī Hiroa Day.

A day when one of our national treasures, Te Rangī Hiroa (Sir Peter Buck), is remembered and the people of today are celebrated.

Te Rangī Hiroa/Sir Peter Buck's achievements are astonishing for their diversity, reading more like a list of possible careers than a biography – a pioneering and internationally renowned anthropologist, the first Maori medical doctor, a politician, administrator, soldier, sports person and leader of the Maori people. Peter Buck explored the Maori/Pakeha cross-cultural advantages of his birth, and exercising a scientific rigour that was largely self-taught, attributed to his success.

On 24 November 2007 the Iwi came together for the third year in a row. This year Dr Janice Wenn presented her thesis, Kaupapa Hauora Maori: Nga Whakaaro Whakahirahira o nga Kaumatua, Celebrating our Elderly.

Dr Janice Wenn is of Ngati Hinewaka, Ngati Moe hapu and Ngati Kahungunu ki Wairarapa descent. She is a graduate of the New Plymouth School of Nursing 1955 and as a midwife in 1957.

She worked as a bush nurse in Tasmania for nine years before returning home to gain an Advanced Diploma in Nursing and a BA in Social Studies.

She was awarded a Diploma in Health Administration and earned a Masters in Arts in 1983. At the age of 74 she was awarded a PhD. She has dedicated a large portion of her life to developing quality systems that make sense to people who are using and providing health services, in particular Maori Health Services.

The day concluded with guest speaker Dr Huirangi Waikerepuru, on celebrating kaumatua and positive aging.



He Iti, He Pounamu

●Toiora Health Lifestyles moved premises having outgrown their office space in just a short period of time. Now located at 188 Powderham Street, New Plymouth.

●Over the past 12 months Tu Tama Wahine o Taranaki have increased the size of their team and would like to welcome Krystal-Jade Hamblyn, Social Worker in Schools Waitara Cluster; Peter Puketapu, Inensive Social Worker for Families; Rosanna Carryer, Social Worker; Carol Shenton, Counsellor; and Dora West. Tu Tama Wahine also welcome back to their team Moewai Aterea after the completion of Te Tohi Whakarei Paetahi.

●Tui Ora welcome two new staff members to the team: Marama Witehira Receptionist/business support, and Paul Tooley, Data Analyst.

Sportswoman Award

Auahi Kore Health Worker Kim Hiroti was awarded Pakeke Wahine (senior sportswoman award), at the inaugural Taranaki Maori Sports Awards earlier this year for her achievements in Touch.

Within her role at Toiora Healthy Lifestyles Kim works to change attitudes and behaviours by implementing projects that works towards an auahi kore environment on the Marae, Sports Clubs and workplaces.

The Auahi Kore kaupapa is one that Kim carries on and off the sports field.

Open Office

Tui Ora Ltd and Hauora Taranaki PHO celebrated another milestone, with the office opening of their shared offices, on 23 July 2007. Both organisations were joined by kaumatua, providers and the wider community at the new offices in the Maru Wehi Complex.

Kura Denness, Chairperson of both Hauora Taranaki PHO and Tui Ora Ltd, in her address illustrated the moved as whanau, "siblings who are working together for a common cause, although they may disagree at times, will grow separately but together".

Hayden Wano (CEO, Tui Ora) and Brenda Rea (CEO Hauora Taranaki PHO) both described the move as one that will create efficiencies for both organisations, with sharing of skills and resources to improve service delivery.

Tui Ora Partner with WOMAD



Tui Ora signing as Programme Partner for WOMAD 2008. As programme partner Tui Ora will have responsibility to oversee space for Te Paepae, a regular feature of WOMAD New Zealand.



Elaine Gill, TAFT Chair, Suzanne Porter, TAFT CEO, Hayden Wano, Tui Ora CEO and Kura Deness, Tui Ora Chair



PO Box 8119
New Plymouth

tui oranga
Newsletter published by TUI ORA LTD

TUI ORA LIMITED

<i>Address</i>	Maru Wehi Hauora 36 Maratahu Street PO Box 8119 New Plymouth	<i>Phone</i>	(06) 759 4064
		<i>Fax</i>	(06) 759 1799
		<i>Email</i>	reception@tuiora.co.nz
		<i>Website</i>	www.tuiora.co.nz

To be added to the distribution list please contact Jane Hawkins-Jones at one of the above contacts

Editor/Publisher Sandra Julian
Auaha Limited

<i>Address</i>	Otumaikuku Barrett Street PO Box 286 New Plymouth	<i>Phone</i>	(06) 759 6920
		<i>Fax</i>	(06) 759 6921
		<i>Email</i>	info@auaha.co.nz
		<i>Website</i>	www.auaha.co.nz